

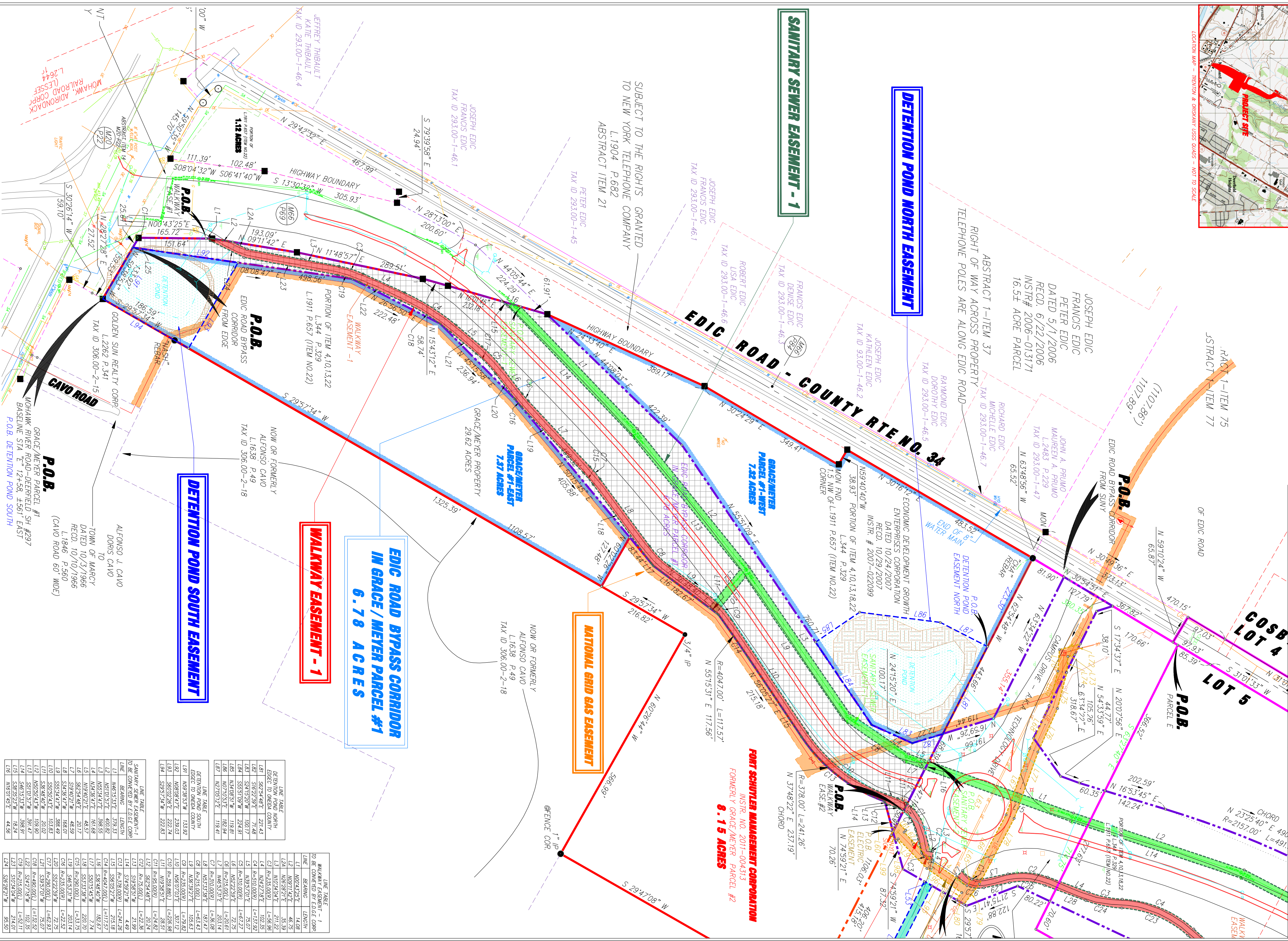
**PARENT PARCEL**  
**GRACE/MEYER**  
**PARCEL 1 WEST - 7.32 ACRES**  
**PARCEL 1 EAST - 7.37 ACRES**  
**EDIG ROAD BYPASS - 6.78 ACRES**  
**TOTAL 21.47 ACRES**

REV	DESCRIPTION	DATE

**PRELIMINARY**  
**5/7/2021**

SUBDIVISION MAP SHOWING LANDS  
**LANDS OF THE PEOPLE OF THE STATE OF NEW YORK &**  
**ECONOMIC DEVELOPMENT GROWTH ENTERPRISES CORPORATION**  
 TOWN OF MARCY ONEIDA COUNTY STATE OF NEW YORK  
**LOFAVE, WHITE & MCGIVERN, L.S., P.C.**  
 LAND SURVEYORS & PHOTOGRAMMETRISTS  
 TERESA BOONVILLE ROME  
 NEW YORK

DRAWN	CHECKED	DATE	SCALE	FILE	SHEET
A.R.B.	A.R.B.	5/7/2021	1" = 100'	08-M02-B	2 OF 3



**SANITARY SEWER EASEMENT - 1**

**DETENTION POND NORTH EASEMENT**

**DETENTION POND SOUTH EASEMENT**

**WALKWAY EASEMENT - 1**

**EDIG ROAD BYPASS CORRIDOR**  
**IN GRACE / MEYER PARCEL #1**  
**6.78 ACRES**

**NATIONAL GRID GAS EASEMENT**

**PORT SCHUTTER MANAGEMENT CORPORATION**  
 INSTR. NO. 2011-004313  
 FORMERLY GRACE MEYER PARCEL #2  
**8.15 ACRES**

LINE	BEARING	LENGTH	AREA
1	N 281°30'0" E	200.60'	0.15
2	S 79°39'58" E	24.94'	0.01
3	N 29°12'59" E	467.99'	0.15
4	S 13°50'32" W	305.93'	0.15
5	N 114°57'0" E	289.51'	0.15
6	N 28°13'00" E	200.60'	0.15
7	N 281°30'0" E	200.60'	0.15
8	S 79°39'58" E	24.94'	0.01
9	N 29°12'59" E	467.99'	0.15
10	S 13°50'32" W	305.93'	0.15
11	N 114°57'0" E	289.51'	0.15
12	N 28°13'00" E	200.60'	0.15
13	N 281°30'0" E	200.60'	0.15
14	S 79°39'58" E	24.94'	0.01
15	N 29°12'59" E	467.99'	0.15
16	S 13°50'32" W	305.93'	0.15
17	N 114°57'0" E	289.51'	0.15
18	N 28°13'00" E	200.60'	0.15
19	N 281°30'0" E	200.60'	0.15
20	S 79°39'58" E	24.94'	0.01
21	N 29°12'59" E	467.99'	0.15
22	S 13°50'32" W	305.93'	0.15
23	N 114°57'0" E	289.51'	0.15
24	N 28°13'00" E	200.60'	0.15
25	N 281°30'0" E	200.60'	0.15
26	S 79°39'58" E	24.94'	0.01
27	N 29°12'59" E	467.99'	0.15
28	S 13°50'32" W	305.93'	0.15
29	N 114°57'0" E	289.51'	0.15
30	N 28°13'00" E	200.60'	0.15
31	N 281°30'0" E	200.60'	0.15
32	S 79°39'58" E	24.94'	0.01
33	N 29°12'59" E	467.99'	0.15
34	S 13°50'32" W	305.93'	0.15
35	N 114°57'0" E	289.51'	0.15
36	N 28°13'00" E	200.60'	0.15
37	N 281°30'0" E	200.60'	0.15
38	S 79°39'58" E	24.94'	0.01
39	N 29°12'59" E	467.99'	0.15
40	S 13°50'32" W	305.93'	0.15
41	N 114°57'0" E	289.51'	0.15
42	N 28°13'00" E	200.60'	0.15
43	N 281°30'0" E	200.60'	0.15
44	S 79°39'58" E	24.94'	0.01
45	N 29°12'59" E	467.99'	0.15
46	S 13°50'32" W	305.93'	0.15
47	N 114°57'0" E	289.51'	0.15
48	N 28°13'00" E	200.60'	0.15
49	N 281°30'0" E	200.60'	0.15
50	S 79°39'58" E	24.94'	0.01
51	N 29°12'59" E	467.99'	0.15
52	S 13°50'32" W	305.93'	0.15
53	N 114°57'0" E	289.51'	0.15
54	N 28°13'00" E	200.60'	0.15
55	N 281°30'0" E	200.60'	0.15
56	S 79°39'58" E	24.94'	0.01
57	N 29°12'59" E	467.99'	0.15
58	S 13°50'32" W	305.93'	0.15
59	N 114°57'0" E	289.51'	0.15
60	N 28°13'00" E	200.60'	0.15
61	N 281°30'0" E	200.60'	0.15
62	S 79°39'58" E	24.94'	0.01
63	N 29°12'59" E	467.99'	0.15
64	S 13°50'32" W	305.93'	0.15
65	N 114°57'0" E	289.51'	0.15
66	N 28°13'00" E	200.60'	0.15
67	N 281°30'0" E	200.60'	0.15
68	S 79°39'58" E	24.94'	0.01
69	N 29°12'59" E	467.99'	0.15
70	S 13°50'32" W	305.93'	0.15
71	N 114°57'0" E	289.51'	0.15
72	N 28°13'00" E	200.60'	0.15
73	N 281°30'0" E	200.60'	0.15
74	S 79°39'58" E	24.94'	0.01
75	N 29°12'59" E	467.99'	0.15
76	S 13°50'32" W	305.93'	0.15
77	N 114°57'0" E	289.51'	0.15
78	N 28°13'00" E	200.60'	0.15
79	N 281°30'0" E	200.60'	0.15
80	S 79°39'58" E	24.94'	0.01
81	N 29°12'59" E	467.99'	0.15
82	S 13°50'32" W	305.93'	0.15
83	N 114°57'0" E	289.51'	0.15
84	N 28°13'00" E	200.60'	0.15
85	N 281°30'0" E	200.60'	0.15
86	S 79°39'58" E	24.94'	0.01
87	N 29°12'59" E	467.99'	0.15
88	S 13°50'32" W	305.93'	0.15
89	N 114°57'0" E	289.51'	0.15
90	N 28°13'00" E	200.60'	0.15
91	N 281°30'0" E	200.60'	0.15
92	S 79°39'58" E	24.94'	0.01
93	N 29°12'59" E	467.99'	0.15
94	S 13°50'32" W	305.93'	0.15
95	N 114°57'0" E	289.51'	0.15
96	N 28°13'00" E	200.60'	0.15
97	N 281°30'0" E	200.60'	0.15
98	S 79°39'58" E	24.94'	0.01
99	N 29°12'59" E	467.99'	0.15
100	S 13°50'32" W	305.93'	0.15
101	N 114°57'0" E	289.51'	0.15
102	N 28°13'00" E	200.60'	0.15
103	N 281°30'0" E	200.60'	0.15
104	S 79°39'58" E	24.94'	0.01
105	N 29°12'59" E	467.99'	0.15
106	S 13°50'32" W	305.93'	0.15
107	N 114°57'0" E	289.51'	0.15
108	N 28°13'00" E	200.60'	0.15
109	N 281°30'0" E	200.60'	0.15
110	S 79°39'58" E	24.94'	0.01
111	N 29°12'59" E	467.99'	0.15
112	S 13°50'32" W	305.93'	0.15
113	N 114°57'0" E	289.51'	0.15
114	N 28°13'00" E	200.60'	0.15
115	N 281°30'0" E	200.60'	0.15
116	S 79°39'58" E	24.94'	0.01
117	N 29°12'59" E	467.99'	0.15
118	S 13°50'32" W	305.93'	0.15
119	N 114°57'0" E	289.51'	0.15
120	N 28°13'00" E	200.60'	0.15
121	N 281°30'0" E	200.60'	0.15
122	S 79°39'58" E	24.94'	0.01
123	N 29°12'59" E	467.99'	0.15
124	S 13°50'32" W	305.93'	0.15
125	N 114°57'0" E	289.51'	0.15
126	N 28°13'00" E	200.60'	0.15
127	N 281°30'0" E	200.60'	0.15
128	S 79°39'58" E	24.94'	0.01
129	N 29°12'59" E	467.99'	0.15
130	S 13°50'32" W	305.93'	0.15
131	N 114°57'0" E	289.51'	0.15
132	N 28°13'00" E	200.60'	0.15
133	N 281°30'0" E	200.60'	0.15
134	S 79°39'58" E	24.94'	0.01
135	N 29°12'59" E	467.99'	0.15
136	S 13°50'32" W	305.93'	0.15
137	N 114°57'0" E	289.51'	0.15
138	N 28°13'00" E	200.60'	0.15
139	N 281°30'0" E	200.60'	0.15
140	S 79°39'58" E	24.94'	0.01
141	N 29°12'59" E	467.99'	0.15
142	S 13°50'32" W	305.93'	0.15
143	N 114°57'0" E	289.51'	0.15
144	N 28°13'00" E	200.60'	0.15
145	N 281°30'0" E	200.60'	0.15
146	S 79°39'58" E	24.94'	0.01
147	N 29°12'59" E	467.99'	0.15
148	S 13°50'32" W	305.93'	0.15
149	N 114°57'0" E	289.51'	0.15
150	N 28°13'00" E	200.60'	0.15
151	N 281°30'0" E	200.60'	0.15
152	S 79°39'58" E	24.94'	0.01
153	N 29°12'59" E	467.99'	0.15
154	S 13°50'32" W	305.93'	0.15
155	N 114°57'0" E	289.51'	0.15
156	N 28°13'00" E	200.60'	0.15
157	N 281°30'0" E	200.60'	0.15
158	S 79°39'58" E	24.94'	0.01
159	N 29°12'59" E	467.99'	0.15
160	S 13°50'32" W	305.93'	0.15
161	N 114°57'0" E	289.51'	0.15
162	N 28°13'00" E	200.60'	0.15
163	N 281°30'0" E	200.60'	0.15
164	S 79°39'58" E	24.94'	0.01
165	N 29°12'59" E	467.99'	0.15
166	S 13°50'32" W	305.93'	0.15
167	N 114°57'0" E	289.51'	0.15
168	N 28°13'00" E	200.60'	0.15
169	N 281°30'0" E	200.60'	0.15
170	S 79°39'58" E	24.94'	0.01
171	N 29°12'59" E	467.99'	0.15
172	S 13°50'32" W	305.93'	0.15
173	N 114°57'0" E	289.51'	0.15
174	N 28°13'00" E	200.60'	0.15
175	N 281°30'0" E	200.60'	0.15
176	S 79°39'58" E	24.94'	0.01
177	N 29°12'59" E	467.99'	0.15
178	S 13°50'32" W	305.93'	0.15
179	N 114°57'0" E	289.51'	0.15
180	N 28°13'00" E	200.60'	0.15
181	N 281°30'0" E	200.60'	0.15
182	S 79°39'58" E	24.94'	0.01
183	N 29°12'59" E	467.99'	0.15
184	S 13°50'32" W	305.93'	0.15
185	N 114°57'0" E	289.51'	0.15
186	N 28°13'00" E	200.60'	0.15
187	N 281°30'0" E	200.60'	0.15
188	S 79°39'58" E	24.94'	0.01
189	N 29°12'59" E	467.99'	0.15
190	S 13°50'32" W	305.93'	0.15
191	N 114°57'0" E	289.51'	0.15
192	N 28°13'00" E	200.60'	0.15
193	N 281°30'0" E	200.60'	0.15
194	S 79°39'58" E	24.94'	0.01
195	N 29°12'59" E	467.99'	0.15
196	S 13°50'32" W	305.93'	0.15
197	N 114°57'0" E	289.51'	0.15
198	N 28°13'00" E	200.60'	0.15
199	N 281°30'0" E	200.60'	0.15
200	S 79°39'58" E	24.94'	0.01

